

An aerial architectural rendering of the A9 Mall in Sheikh Zayed. The image shows a large, modern building with a distinctive, angular roof structure and a facade of vertical slats. The building is surrounded by lush greenery, including trees and landscaped areas. In the foreground, there are several cars parked on a street, and a few people are walking on a pedestrian path. The overall scene is presented in a dark, monochromatic style with white text overlaid.

# A9

## MALL

SHEIKH ZAYED

A Project by



At DCM Developments, we believe in creating vibrant commercial spaces that offer both value and an exceptional experience. A9 Mall is a testament to this vision—a dynamic retail and business hub designed for comfort, convenience, and success.

We're proud to partner with AD Developments, the visionary minds behind this project, to bring this shared dream to life. Together, we blend modern design with thoughtful details, ensuring every aspect of A9 Mall is crafted with quality and care to provide an unparalleled destination for businesses and visitors alike.

*DCM Developments*





# The Perfect Blend of Retail, Offices, and Clinics



TOGETHER, WE BUILD MORE - DCM DEVELOPMENTS





TOGETHER, WE BUILD MORE - DCM DEVELOPMENTS





# A Vision of Excellence

More than just a shopping center, A9 Mall is a dynamic space that brings together retail, dining, offices, and medical services in one prime location. Situated next to Hyper One in Sheikh Zayed City, it offers easy access to a variety of essential services, making it a go-to destination for both residents and visitors.

Spanning 2,000 square meters, A9 Mall features a diverse mix of stores, administrative offices, and clinics, all designed with modern amenities and a welcoming atmosphere. Whether you're shopping, working, or seeking professional services, A9 Mall provides the perfect environment for families, professionals, and entrepreneurs to thrive.







TOGETHER, WE BUILD MORE - DCM DEVELOPMENTS





# A Prime Location for Business & Lifestyle

Perfectly positioned in Sheikh Zayed, A9 Mall offers unmatched convenience with direct access to the 26th of July Corridor, Cairo-Alex Desert Road, and Dahshour Links. This strategic location ensures easy connectivity for shoppers, professionals, and business owners alike.

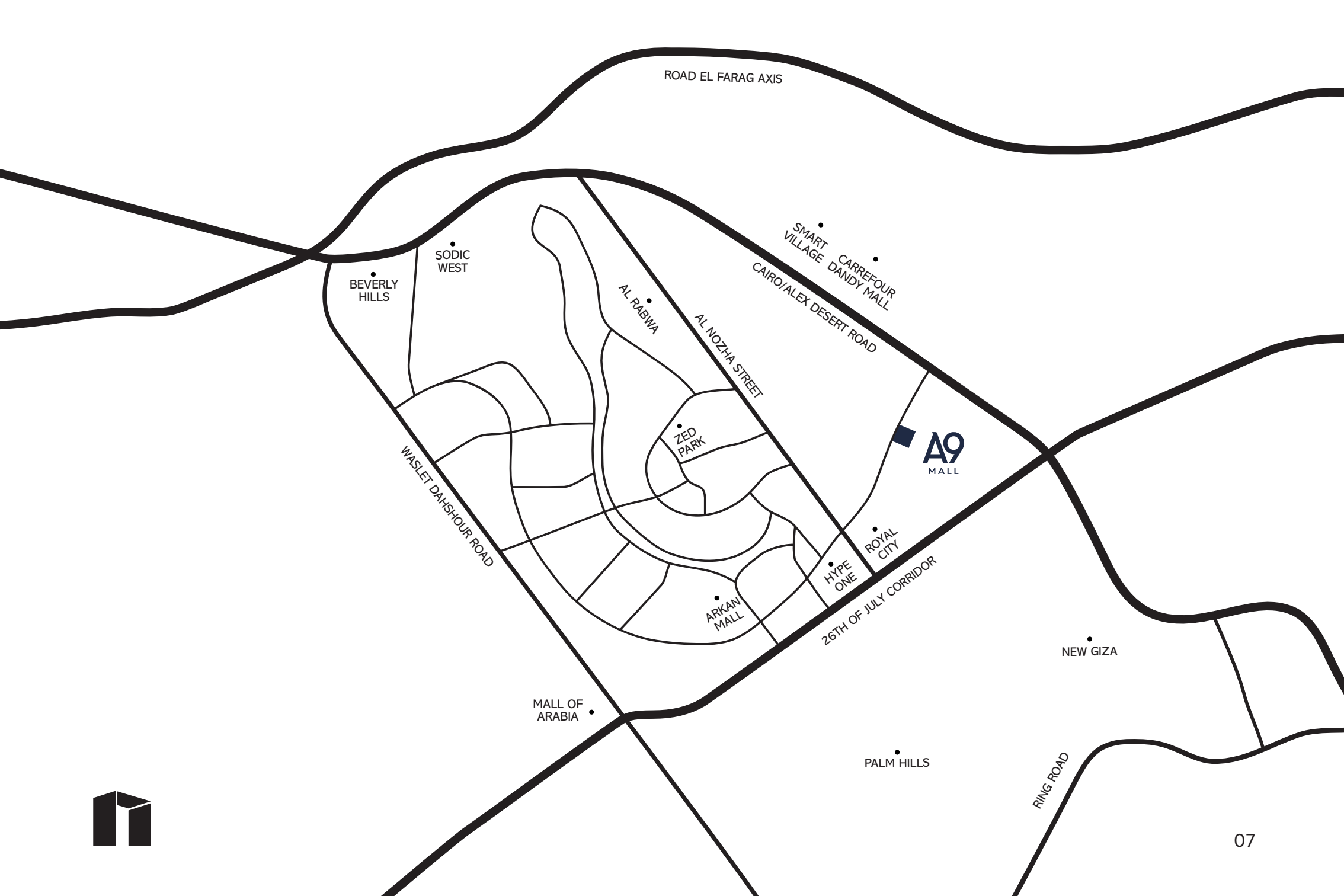
With high foot traffic and a vibrant atmosphere, A9 Mall is the ideal choice for retail shops, offices, and clinics, providing maximum visibility and accessibility in a fast-growing community. Whether for business or leisure, A9

## Next To

- Al Nuzha St.
- Hyper One
- Smart Village
- Sphinx Internatinal Airport
- Royal City
- West Village (Dorra)
- Cairo Gate (Emaar)
- Arkan Mall







ROAD EL FARAG AXIS

SMART VILLAGE  
CARREFOUR DANDY MALL  
CAIRO/ALEX DESERT ROAD

AL RABWA  
AL NOZHA STREET

BEVERLY HILLS  
SODIC WEST

WASLET DAHSHOUR ROAD

ZED PARK

ARKAN MALL

ROYAL CITY  
HYPE ONE  
26TH OF JULY CORRIDOR

A9  
MALL

MALL OF ARABIA

PALM HILLS

NEW GIZA

RING ROAD







# A Modern & Welcoming Space

A9 Mall is designed to be stylish, comfortable, and practical, offering a vibrant destination for shopping, business, and leisure. Its stunning exterior not only catches the eye but also enhances the visitor experience with a spacious and well-planned layout.

Expansive glass panels allow natural light to flow throughout the space, creating a bright and inviting atmosphere. The mall also features terrace areas and outdoor spaces, perfect for outdoor seating, dining, and social gatherings.

With its striking design, great facilities, and seamless flow, A9 Mall is more than just a mall—it's a new destination that brings people together in a lively and modern space.







A9

TOGETHER, WE BUILD MORE | DCM DEVELOPMENTS





A woman with long brown hair, wearing a sleeveless taupe top and light blue trousers, stands in a modern clothing store. She is holding a large brown paper shopping bag in her left hand and gesturing with her right hand towards a rack of clothes. The rack is filled with various garments, including jackets, sweaters, and trousers, mostly in neutral tones like beige, taupe, and light brown. The store has large windows in the background, letting in natural light, and the floor is made of light-colored tiles. The overall atmosphere is bright and stylish.

# An Inspiring Shopping Journey with Style & Convenience



TOGETHER, WE BUILD MORE - DCM DEVELOPMENTS



A man and a woman are working together in a modern office. The woman, wearing a maroon shirt and beige pants, is standing and smiling as she looks at a laptop. The man, wearing a blue shirt and glasses, is sitting at a wooden desk, smiling and pointing at the laptop screen with a blue pen. The office has large windows, indoor plants, and a modern design.

# A Modern Workplace Designed for Productivity & Success



TOGETHER, WE BUILD MORE - DCM DEVELOPMENTS





# Advanced Healthcare Spaces for Comfort & Care



TOGETHER, WE BUILD MORE - DCM DEVELOPMENTS





# Seamless Experiences That Bring Life & Community Together



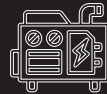


# Outstanding Facilities for Comfort & Ease

A9 Mall is thoughtfully designed with modern features that enhance comfort, safety, and efficiency. From advanced security systems to easy access, every detail is crafted to ensure a smooth and enjoyable experience for visitors and tenants. With well-planned spaces, high-quality services, and smart design, A9 Mall sets a new standard for effortless ease and everyday comfort.



Prayer  
Room



Generators



Fire Fighting  
System



surveillance  
cameras



ATM  
Machines



Parking  
Spaces



Customer  
Service



Elevators



Escalators



Central Air  
Conditioning







TOGETHER, WE BUILD MORE. DCM DEVELOPMENTS







TOGETHER, WE BUILD MORE - DCM DEVELOPMENTS



A9

TOGETHER, WE CAN BUILD MORE - DCM DEVELOPMENTS



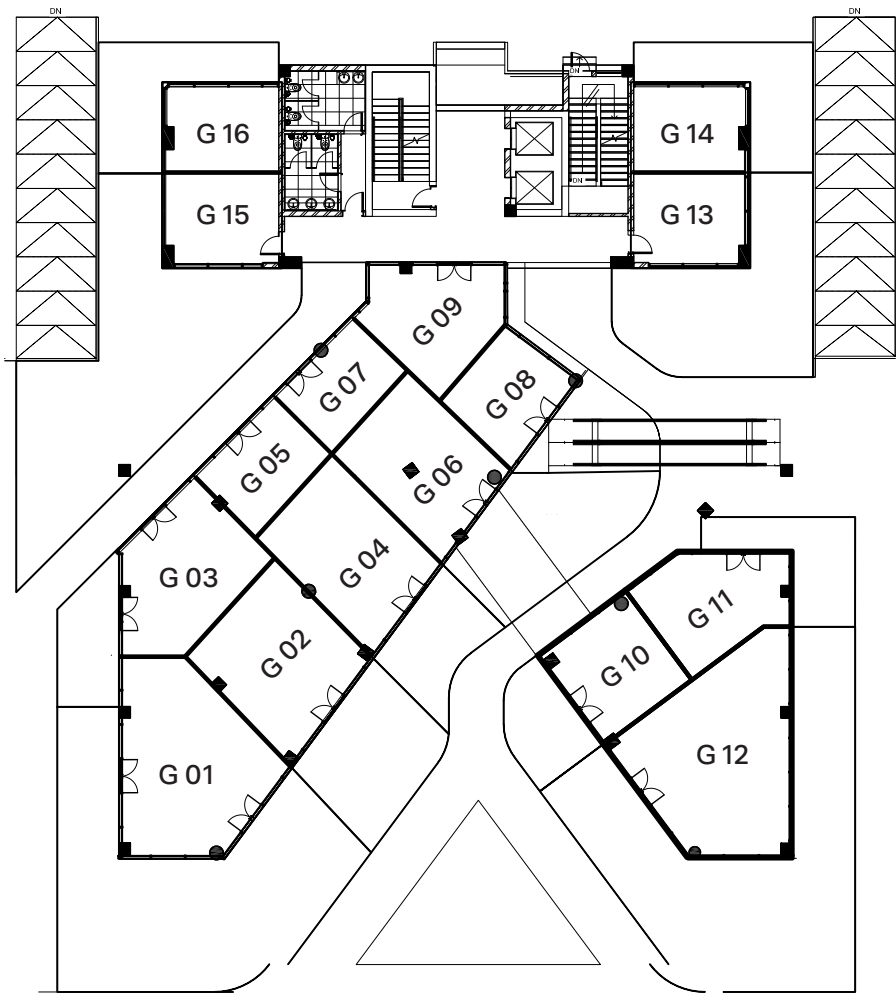


# Ground Floor

## Retail Spaces Designed for Success

16 retail shops with eye-catching storefronts and prime exposure, ensuring high foot traffic and a lively shopping atmosphere.

Unit	Indoor	Outdoor
G01	72.20	97
G02	55.00	30
G03	49.50	15
G04	51.90	-
G05	27.30	-
G06	48.00	37
G07	25.20	-
G08	29.40	-
G09	40.60	-
G010	37.50	15
G011	39.40	19
G012	82.20	99
G013	31.80	51
G014	30.00	25
G015	31.80	96
G016	30.00	25



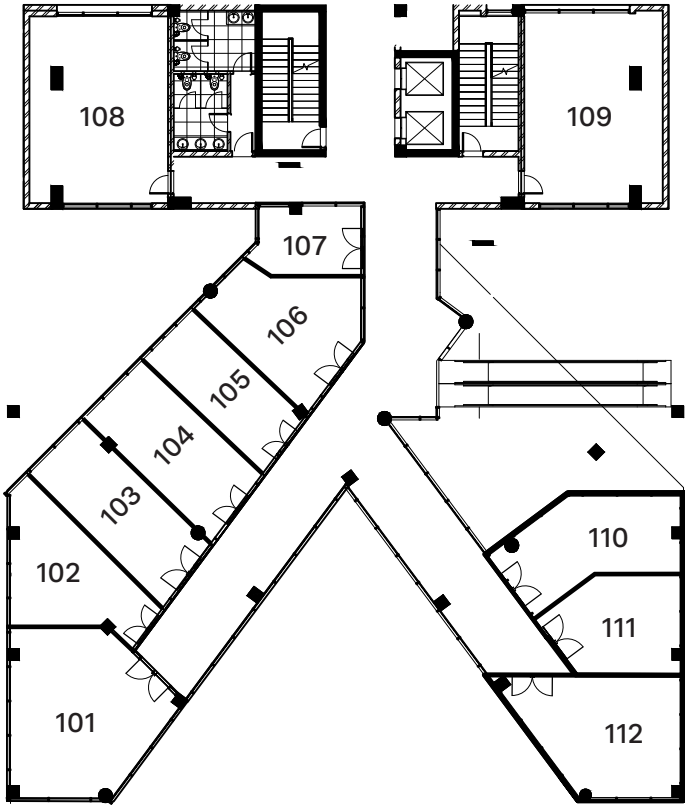
**Disclaimer:** 1.These renders are for illustrative purposes only; Minor changes are applicable as per actual Master planning design, construction, constructed units and to the CADs. Please refer to the site and to the CADs. 2.Floor plans layout and furniture plans are for indicative purposes. 3.Please refer to the inventory list, CADs and actual constructed units for areas and areas details. Rendered areas details are based on averages and may vary per unit. 4.Diagrams are not to scale. 5.Room dimensions are consistent with structural elements and do not include wall finishes or additional construction. 6.Exact specifications and details vary between each unit. For exact technical details, please refer to the contract. 7.Reserving the right to make minor alterations to the drawings of %5 added or deducted from areas&values.

# First Floor

## Diverse Retail Spaces for Every Shopping Need

12 retail shops, providing versatile spaces for a wide range of brands from boutiques to specialty stores, ensuring a rich and varied shopping experience.

Unit	Indoor
101	68.65
102	41.70
103	41.60
104	41.90
105	33.00
106	44.25
107	22.30
108	82.90
109	82.90
110	43.30
111	34.80
112	53.00



**Disclaimer:** 1.These renders are for illustrative purposes only; Minor changes are applicable as per actual Master planning design, construction, constructed units and to the CADs. Please refer to the site and to the CADs. 2.Floor plans layout and furniture plans are for indicative purposes. 3.Please refer to the inventory list, CADs and actual constructed units for areas and areas details. Rendered areas details are based on averages and may vary per unit. 4.Diagrams are not to scale. 5.Room dimensions are consistent with structural elements and do not include wall finishes or additional construction. 6.Exact specifications and details vary between each unit. For exact technical details, please refer to the contract. 7.Reserving the right to make minor alterations to the drawings of %5 added or deducted from areas&values.

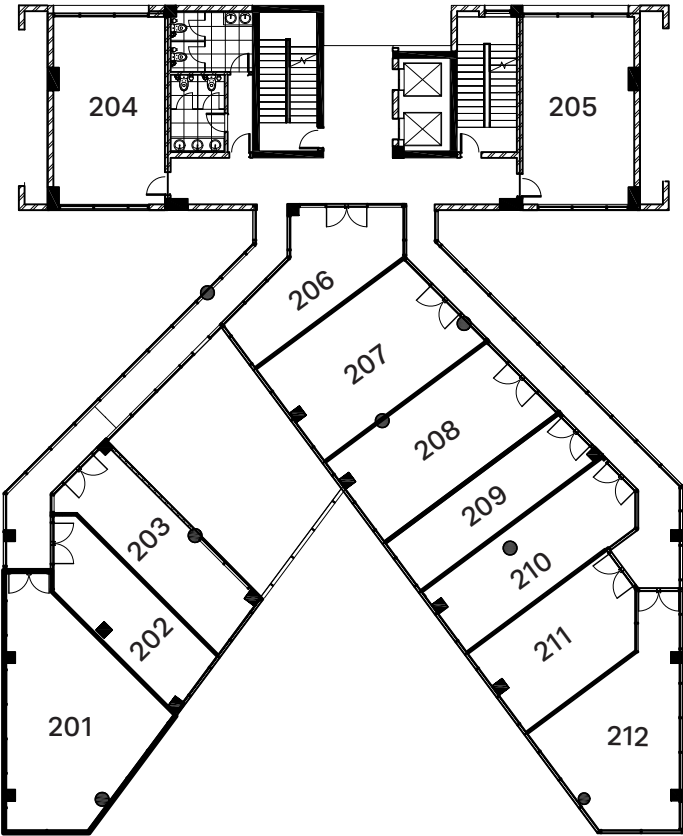


# Second Floor

## Smart Office Spaces for Growing Businesses

12 administrative offices, designed for small businesses and professionals looking for a stylish & efficient work environment that supports growth

Unit	Indoor
201	82.20
202	40.10
203	47.00
204	64.80
205	64.90
206	43.00
207	63.10
208	64.40
209	41.00
210	49.10
211	50.00
212	64.20



TOGETHER, WE BUILD MORE - DCM DEVELOPMENTS

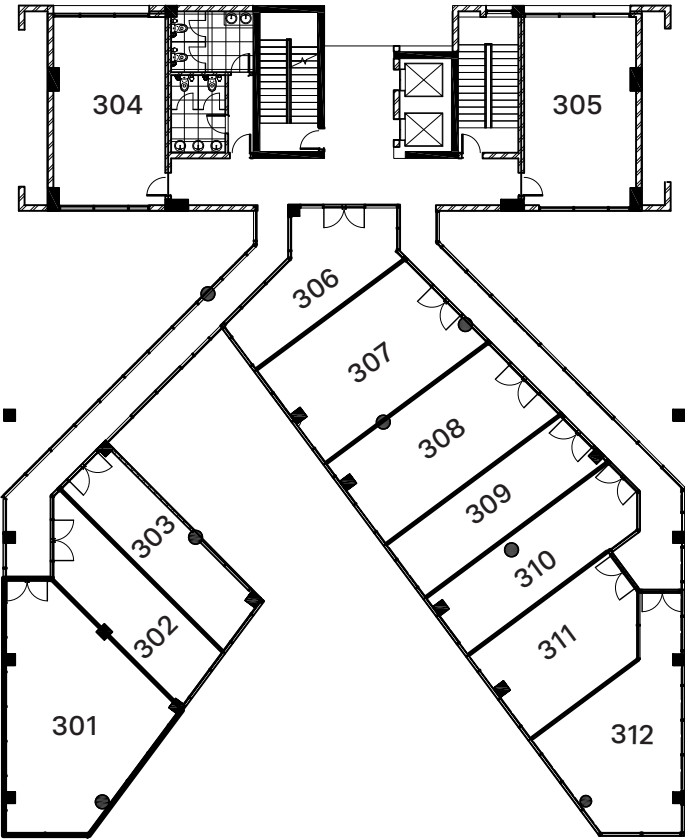
**Disclaimer:** 1. These renders are for illustrative purposes only; Minor changes are applicable as per actual Master planning design, construction, constructed units and to the CADs. Please refer to the site and to the CADs. 2. Floor plans layout and furniture plans are for indicative purposes. 3. Please refer to the inventory list, CADs and actual constructed units for areas and areas details. Rendered areas details are based on averages and may vary per unit. 4. Diagrams are not to scale. 5. Room dimensions are consistent with structural elements and do not include wall finishes or additional construction. 6. Exact specifications and details vary between each unit. For exact technical details, please refer to the contract. 7. Reserving the right to make minor alterations to the drawings of %5 added or deducted from areas&values.

# Third Floor

## Modern Clinics for Quality Healthcare

12 well-equipped medical clinics, offering professional healthcare services in a comfortable and welcoming environment for both patients and practitioners.

Unit	Indoor
301	86.40
302	41.00
303	41.20
304	65.00
305	64.70
306	42.00
307	63.20
308	59.10
309	41.10
310	45.70
311	47.70
312	62.60



**Disclaimer:** 1.These renders are for illustrative purposes only; Minor changes are applicable as per actual Master planning design, construction, constructed units and to the CADs. Please refer to the site and to the CADs. 2.Floor plans layout and furniture plans are for indicative purposes. 3.Please refer to the inventory list, CADs and actual constructed units for areas and areas details. Rendered areas details are based on averages and may vary per unit. 4.Diagrams are not to scale. 5.Room dimensions are consistent with structural elements and do not include wall finishes or additional construction. 6.Exact specifications and details vary between each unit. For exact technical details, please refer to the contract. 7.Reserving the right to make minor alterations to the drawings of %5 added or deducted from areas&values.





4th floor, Office 402,  
Ritzy mall, Sheikh Zayed | Giza, Egypt  
[info@dcm-developments.com](mailto:info@dcm-developments.com)  
[www.dcm-developments.com](http://www.dcm-developments.com)

**☎ 19329**